

- Simulates All Pickering PXI & LXI Switching Products
- More Than 1000 Switching Product Configurations Available
- Supports Over 18 Simulated PXI Slots
- Allows Code Development Independently From The Application Hardware
- Ethernet 100base T Interface
- Powered From Standard 5V Inline Power Supply
- Highly Portable
- 3 Year Warranty



The 60-901 simulates all of Pickering's PXI and LXI switching products, and most of the simulation and instrumentation range in one highly portable package. Each product is supported as a virtual LXI device allowing code development with minimal hardware, it also has the ability to show real-time switching and debug information and comes complete with a driverless soft front panel that provides complete control of the module's functions. The 60-901 provides the user with a simple and highly portable platform for application development.

### Supported Products

The 60-901 allows the user to simulate any of Pickering Interface's PXI switching modules fitted into a virtual Modular LXI Chassis, over 18 virtual PXI card slots can be supported. There is also partial support for Pickering's simulation and instrumentation modules including programmable resistors. All Pickering's LXI switching products are also supported.

### Software

The tool provides a link to a downloadable generic IVI driver to control the PXI and LXI products in accordance with the LXI

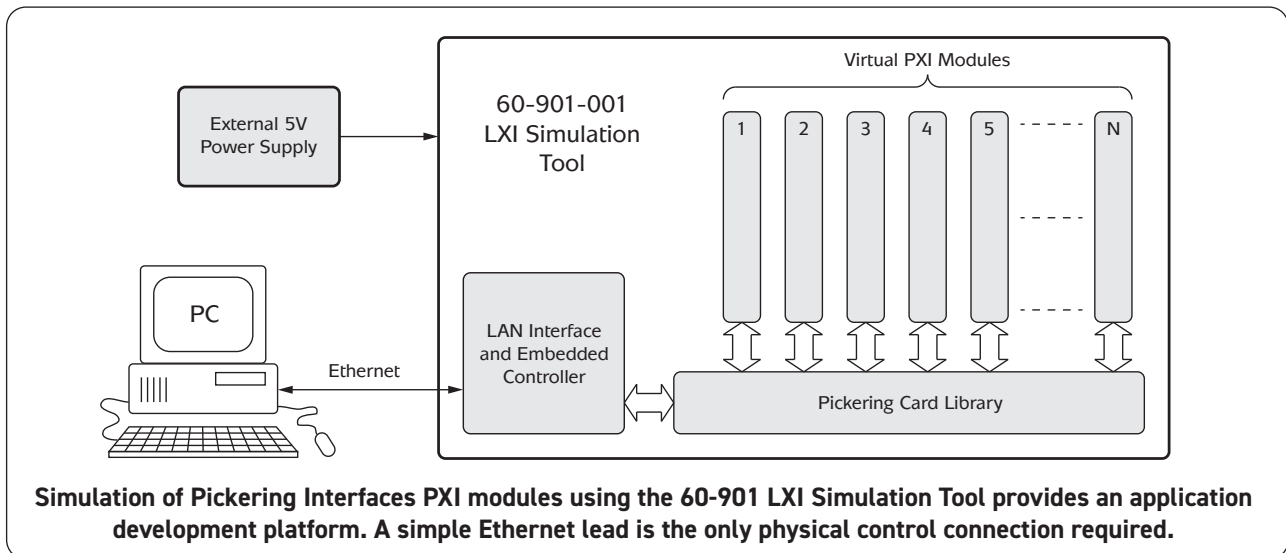
specification, but can also be controlled through a kernel driver. A library of PXI and LXI products and firmware is installed on the Simulation Tool on a removable memory card, allowing easy upgrades.

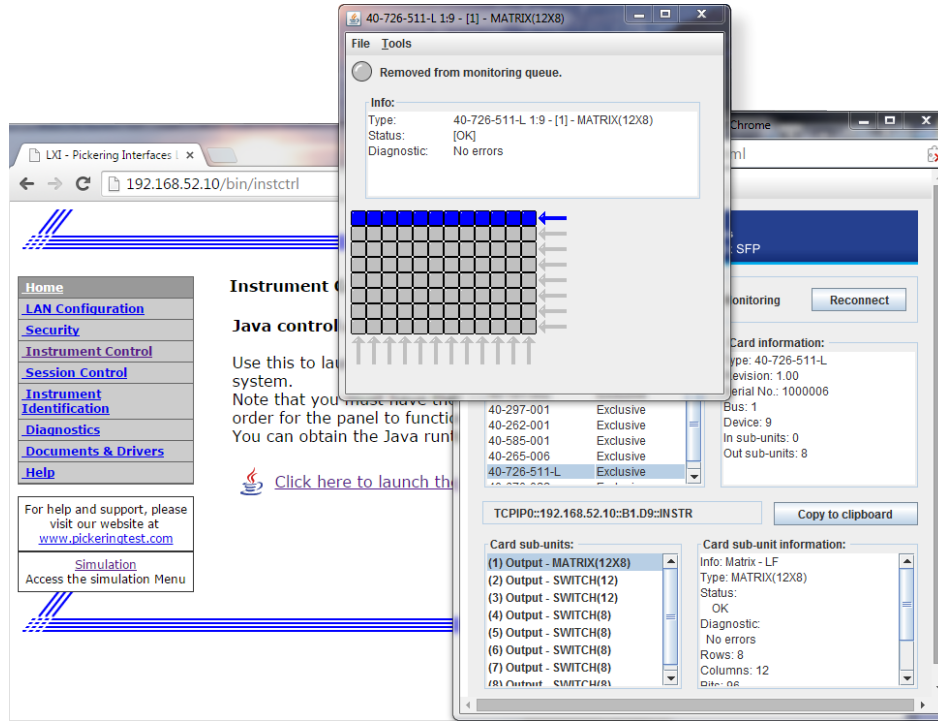
### Code Development

Our standard LXI driver and debug panel are provided to assist application development. An 8x8 LED matrix on the tool along with a web panel displays the switch status of the simulated module for debug purposes. With the 60-901 you can code and test your LXI control application before purchasing or connecting to your Pickering LXI test system.

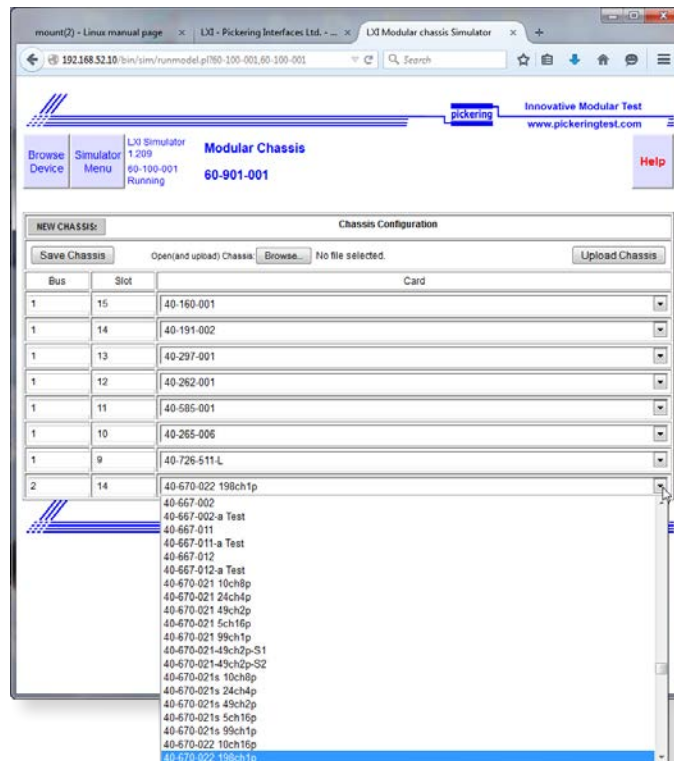
### Ethernet Control

The Ethernet interface enables control through standard LAN interfaces found on all system PC/host controllers. The 60-901 can be easily configured using any standard web browser. The interface can be used to load a Java based soft front panel for any of the products simulated by the tool, permitting users to access products without the need for drivers on the PC/host.





The 60-901 selected chassis provides soft front panels to enable manual operation through the web interface, in this example for a 40-726 matrix module.



Configuration page for a modular chassis which allows a choice of virtual PXI modules

## Specification

Capacity:	Over 18 simulated user slots available.
Power Supply:	Supplied with a 5V 1A DC in line power supply.
Monitoring Top Panel Display:	Dual function LED matrix shows IP address and switch status.
LAN Interface Connector:	RJ45 Connector.
Connection Speed:	100baseT interface.
Supporting Documentation:	Manuals, drivers and product catalogs can be downloaded from the Pickering Interfaces website.
Mechanical Characteristics Dimensions:	Width: 94mm (3.70") Height: 76mm (3.00") Depth: 32mm (1.26")
Weight:	100g

## Operating/Storage Conditions

### Operating Conditions

Operating Temperature:	0°C to +55°C
Humidity:	10% to 95% non-condensing

### Storage and Transport Conditions

Storage Temperature:	-20°C to +70°C
Humidity:	10% to 90% non-condensing

## Safety & CE Compliance

All products are fully CE compliant and meet applicable EU directives: Low-voltage safety EN61010-1:2010, EMC Immunity EN61326-1:2013, Emissions EN55011:2009+A1:2010.

The 60-901 LXI Simulator also complies with the European Restriction of Hazardous Substances directive (RoHS).

## Product Compatibility

The LXI Simulator is supplied with links to drivers for the majority of Pickering's PXI and LXI products.	
Switching Support	All of Pickering Interface's PXI and LXI switching products.
Instrumentation support:	Partial support: PXI programmable resistor/potentiometer modules and RF attenuators.
Soft Front Panel:	All supported products can be controlled through a standard W3C compliant web browser.
For a selection guide on the range of PXI modules capable of being simulated by the 60-901 tool, please see the PXI Module Selection Guide in the LXI Product Guide. This is available as a download from the On-Line Catalogs section of our website: <a href="http://pickeringtest.com">pickeringtest.com</a>	

## Product Order Codes

LXI Simulation Tool

60-901-001

## Product Customization

Pickering PXI modules are designed and manufactured on our own flexible manufacturing lines, giving complete product control and enabling simple customization to meet very specific requirements.

All customized products are given a unique part number, fully documented and may be ordered at any time in the future. Please contact your local sales office to discuss.

## Connectivity Solutions

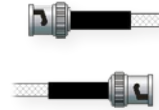
We provide a full range of supporting cable and connector solutions for all our switching products—20 connector families with 1200+ products. We offer everything from simple mating connectors to complex cables assemblies and terminal blocks. All assemblies are manufactured by Pickering and are guaranteed to mechanically and electrically mate to our modules.



Connectors & Backshells



Multiwire Cable Assemblies



RF Cable Assemblies



Connector Blocks

We also offer customized cabling and have a free online **Cable Design Tool** that can be used to create custom cable solutions for many applications.

Visit: [pickeringtest.com/cdt](http://pickeringtest.com/cdt) to start your design.

### Mass Interconnect

We recommend the use of a mass interconnect solution when an Interchangeable Test Adapter (ITA) is required for a PXI or LXI based test system. Our modules are fully supported by both Virginia Panel and MacPanel.

### Pickering Reed Relays

We are the only switch provider with in-house reed relay manufacturing capability via our sister company, Pickering Electronics. These instrument grade reed relays feature **SoftCenter®** technology, ensuring long service life and repeatable contact performance.

To learn more, please go to: [pickeringrelay.com](http://pickeringrelay.com)

### Programming

All LXI devices are supplied with built-in software drivers, web pages for configuration and soft front panels as required by the LXI specification. A variety of drivers are provided (C, .NET, IVI, SOAP) which are compatible with all Microsoft supported versions of Windows and popular older versions. For a list of all supporting operating systems, please see: [pickeringtest.com/os](http://pickeringtest.com/os)

The drivers may be used in many commonly used programming environments and applications including:

- **Pickering Interfaces Switch Path Manager**
- **National Instruments** products (LabVIEW, LabWindows/CVI, Switch Executive, MAX, TestStand, VeriStand, etc.)
- **Microsoft Visual Studio** products (Visual Basic, Visual C++, Visual C#)
- **Keysight** VEE and OpenTAP
- **Mathworks** Matlab
- **Marvin** ATEasy
- **MTQ Testsolutions** Tecap Test & Measurement Suite

As well as various open source environments such as:

- **Sharp Develop**
- **Dev-C++**

To learn more about software drivers and development environments, please go to: [pickeringtest.com/software](http://pickeringtest.com/software)



## Signal Routing Software

Our signal routing software, Switch Path Manager, automatically selects and energizes switch paths through Pickering switching systems. Signal routing is performed by simply defining test system endpoints to be connected together, greatly accelerating Test System software development.

To learn more, please go to: [pickeringtest.com/spm](http://pickeringtest.com/spm)



## Diagnostic Relay Test Tools

eBIRST Switching System Test Tools are designed specifically for our PXI, PCI or LXI products, these tools simplify switching system fault-finding by quickly testing the system and graphically identifying the faulty relay.

To learn more, please go to: [pickeringtest.com/ebirst](http://pickeringtest.com/ebirst)

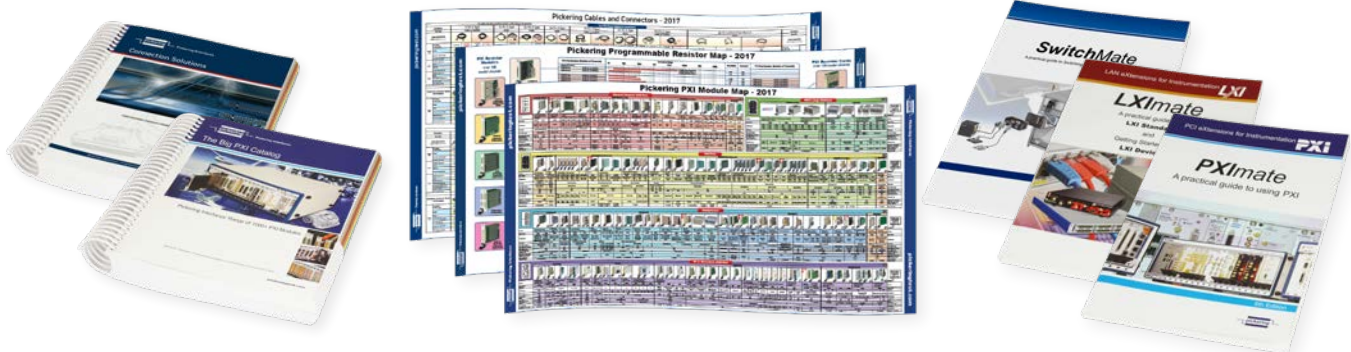


## Three Year Warranty

All standard products manufactured by Pickering Interfaces are warranted against defective materials and workmanship for a period of three years from the date of delivery to the original purchaser. Extended warranty and service agreements are available for all our modules and systems with various levels to suit your requirements. Although we offer a 3-year warranty as standard, we also include guaranteed long-term support—with a history of supporting our products for typically 15-20 years. To learn more, please go to: [pickeringtest.com/support](http://pickeringtest.com/support)

## Available Product Resources

We have a large library of product resources including success stories, product and support videos, articles, as well as complete product catalogs and product reference maps to assist when looking for the switching, simulation and cable and connector solutions you need. We have also published handy reference books on Switching Technology and for the PXI and LXI standards.



To view, download or request any of our product resources, please visit: [pickeringtest.com/resources](http://pickeringtest.com/resources)

© Copyright (2020) Pickering Interfaces. All Rights Reserved  
Pickering Interfaces maintains a commitment to continuous product development, consequently we reserve the right to vary from the description given in this data sheet.